

3-DAY Spring AUCTION

7704 Mapleville Road - Boonsboro, MD 21713

J.G. Cochran

AUCTIONEERS & ASSOCIATES LTD.
 Professional Auctioneers & Appraisers Since 1972
 7704 MAPLEVILLE ROAD, P.O. BOX 222
 BOONSBORO, MD 21713-0222
 301-739-0538 • FAX 240-739-7663
 TOLL FREE (MD) 1-800-310-2844 • CochranAuctions.com



PRESORT
 FIRST CLASS
 U.S. POSTAGE
 PAID
 THE MAIL MAN

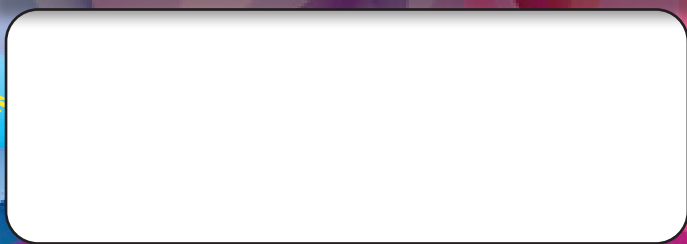


Webb Lathe from Estate



Case 750L- Low Hour

WED. EVENING
APRIL 9, 2025 • 4 PM
THURSDAY & FRIDAY
APRIL 10-11, 2025 • 8 AM

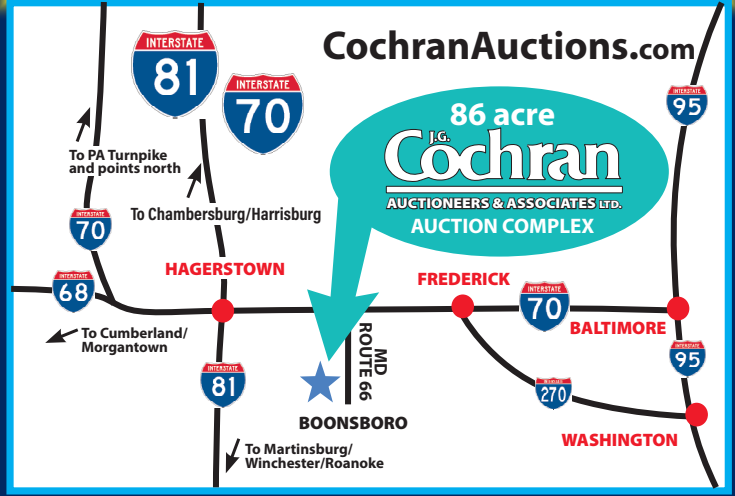


3-DAYS LIVE • WED. EVENING • APRIL 9, 2025 • 4 PM
LIVE • THURSDAY • APRIL 10, 2025 • 8 AM
LIVE & ONLINE • FRIDAY • APRIL 11, 2025 • 8 AM

EquipmentFacts



CHECK OUT OUR WEBSITE AT
COCHRANAUCTIONS.COM
 FOR MORE DETAILS AND PHOTOS!
10% BUYERS PREMIUM ON ALL ITEMS \$5,000 & LESS
ITEMS \$5,001 & UP \$500 FLAT FEE PER ITEM



DIRECTIONS • ACCOMMODATIONS
 Located approximately 70 miles west of the Baltimore/Washington Metro Area, the auction will be held at the 86 acre COCHRAN AUCTION COMPLEX conveniently located just 4 miles south of Exit 35 off Interstate 70 on Maryland Route 66 at Boonsboro, MD.
INSPECTION: On all major equipment on Thursday, 9AM to 4PM
GPS ADDRESS: 7704 Mapleville Road, Boonsboro, MD
SALE SITE PHONE: (301) 739-0538 OR (800) 310-2844 (TOLL FREE MD)
AIRPORT: Hagerstown Regional Airport
AREA ACCOMMODATIONS:



COMFORT SUITES • HAGERSTOWN
 Call and ask for your special low Cochran Auction Rate (301) 791-8100
 Hampton Inn (301) 739-6100



TERMS:
COMPLETE PAYMENT SALE DAY: Payments for all items must be made in full on sale day with cash, cashier's checks, travelers checks or money orders. Personal or company checks will be accepted with a valid bank letter of guaranteed payment. All sales subject to the applicable 6% sales tax of the State of Maryland. The Auction Company and Seller shall not be responsible for the correct description, authenticity, genuineness of, or defect in any or all lots. Grades should only be used as a guide and are not and will not be guaranteed. Everything sold at this auction will sell as-is and where-is to the highest bidder regardless of price.
NOTE: Several Auctioneers will be selling at one time. Please come prepared for this arrangement. Subject to additions and detections. Not responsible for acts of our principles. Some items selling with reserves.
10% BUYERS PREMIUM ON ALL ITEMS \$5,000 & LESS
\$5,001 & UP \$500 FLAT FEE PER ITEM

3-DAY CONTRACTORS REGIONAL EQUIPMENT, TRUCK & TRAILER

Live WEDNESDAY Evening
Live THURSDAY
Live FRIDAY & ONLINE

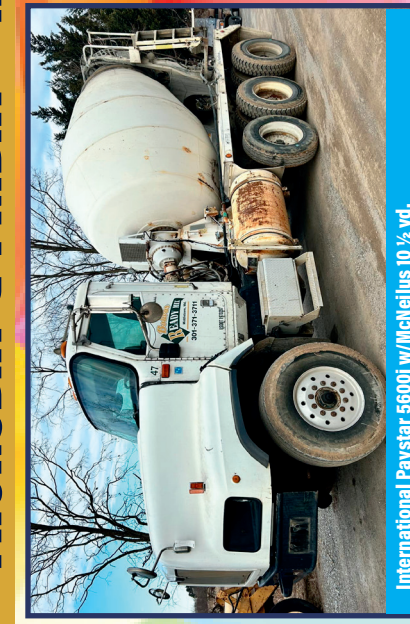
7704 Mapleville Road
 Boonsboro, MD 21713

AUCTION

WEDNESDAY EVENING • APRIL 9, 2025 • 4 PM
THURSDAY & FRIDAY • APRIL 10 & 11, 2025 • 8 AM



Kubota S5175- Low Hour



International Paystar 56001 w/Michelin 10 1/2 yr.



Kobelco SK660LC



Case 750L- Low Hour

SELLING EQUIPMENT, TRUCKS AND TRAILERS FOR:

- * Selling for Mr. & Mrs. Dean Lowry, who are selling their home and moving- selling tractor, farm equipment, woodworking equipment and tools
- * Selling for an Estate from Hedgesville, WV- selling skid loader, farm equipment, shop equipment and tools
- * Selling for an Estate from Inwood, WV- machine shop equipment and tools

SELLING EQUIPMENT, TRUCKS AND TRAILERS FOR:

- * Selling for Several Local Estates
- * Washington County Government
- * City of Hagerstown, Maryland & Other Municipalities
- * Washington County Sheriff's Department
- * Other Regional Contractors, Dealers, Banking Institutions and Public are participating!



International 7400 T/A w/Heil

J.G. Cochran
 AUCTIONEERS & ASSOCIATES LTD.



7704 MAPLEVILLE ROAD, P.O. BOX 222
 BOONSBORO, MD 21713-0222
 301-739-0538 • FAX 240-739-7663
 TOLL FREE (MD) 1-800-310-2844

NATIONALLY RECOGNIZED, AWARD WINNING AUCTIONEERS SINCE 1972

3 DAY AUCTION • APRIL 9 • 4 PM/APRIL 10 • 8 AM/APRIL 11 • 8 AM • 2025

Live WEDNESDAY - APRIL 9, 2025 - 4:00 PM

RESTAURANT EQUIPMENT & NEW/UNUSED ELECTRICAL SUPPLIES & TOOLS: Varimixer W20 Stainless Steel Table Top; Chester Fried Unit; Alto-Shaam AR-7E Rotisserie Oven; True Heated Cabinet; Warming Cabinets; Hobart Glass Door Refrigerator; McCall 2-Door Stainless Steel Freezer; Victory 2-Door Stainless Steel Hallmark Dual Temp; Star HFD-2A Humidity Cabinet; KFC Pressure Fryer; Vulcan 2-Basket Deep Fryer; StarMax 2-Basket Table Top Deep Fryer; Star Table Top Stainless Steel Grill; Star Table Top Stainless Steel Grill; Star 2-Burner Cook Top; Hobart Stainless Steel Table Top Oven; Several Stainless Steel Sandwich Prep Stations; Hobart Hog Dog Table Top Roller; Univex Potato Peeler; Bunn Ice Tea Dispenser; Bunn Precision Grinder; Duke Warmer; Globe Scales; Popcorn Machine; (2)Serve Well 3-Compartment on Wheels; Various Stainless Steel Tables; Stainless Steel Table w/ Single Sink; Several Large Walk-in Freezers; Open Flower Cooler; Baker Aluminum Racks; (12)Aluminum Dunnage Racks; Gorilla Shelving; New Restaurant Chairs; Chair Registers; Plates; Signs & Others Items Too Numerous To Mention.

LARGE TRUCK LOAD OF NEW/UNUSED ELECTRICAL SUPPLIES & TOOLS OF ALL KIND!

Live THURSDAY, APRIL 10, 2025 - 8 AM

SHOP EQUIPMENT, TOOLS & MISCELLANEOUS: Gutter Machine, Webb Lathe Complete w/3-Phase Converter, Bridgeport Milling Machine Computerized w/3 Phase Converter, Harig Super 612 Surface Grinder, Large Mac Tool Box Completely Full of Tools, Large Kennedy Tool Box Completely Full of Tools & Many Other Tool Boxes, Machinist Tools, Various Drill Presses, Various Band & Table Saws, Various Radial Arm Saws, Planers, Jointers, Sanders, Various Air Compressors, Pallet Shelving, Shop Benches, Selection of Power Tools of all kind, Mechanic Tools, Sockets & Wrenches of all kind, Hardware of all kind, Clamps, Battery Operated Tools, Floor Jacks, Bench Grinders, Chop Saws, Tap & Die Sets, Shop Carts, Torch Outfits, Oil Drain, Floor Jacks, Jack Stands, Mig Welders, Grinders, Tire Changer, Fiberglass & Aluminum Ladders. Hundreds of Items not listed- Most all in Good Condition!

BUILDING #5 COMPLETELY PACKED! Virtually Impossible To List!

LAWN & GARDEN EQUIPMENT (Some New & Like New) including: Zero Turn Mowers, Conventional Mowers, Power Mowers, Chain Saws, Weed Wackers, Leaf Blowers & Other Related Items.

TRACTOR TRAILER LOAD OF NEW/UNUSED METAL ROOFING AND SIDING - NOT Seconds- Just Over Runs- Various Color & Size

(4)TRACTOR TRAILER LOADS OF WALL PANELS, ROOF TRUSS, FLOOR TRUSS & OTHER BUILDING MATERIAL

TRACTOR TRAILER LOAD OF ROUGH CUT CHERRY, WALNUT & OTHER LUMBER

(2)TRACTOR TRAILER LOAD OF NEW/UNUSED PATIO BLOCKS & PADS

BEAUTIFUL SELECTION OF PLANTS, TREES, ETC: Big selection of Fruit Trees, Shade and Flowering Trees, Perennials, Arborvitae and Leyland Cypress for Privacy Hedges, Flowering and Ornamental Shrubs - and MUCH MORE! All from our good friend- Guy Mueller from Lancaster County- All High Quality!

**** NOTE: MAY BE SELLING WITH UP TO (3) AUCTIONEERS AT ONE TIME!! PLEASE COME PREPARED!! - ITEMS COMING IN DAILY!! ****

Live & ONLINE FRIDAY, APRIL 11, 2025 - 8 AM

GROVE RT518 ROUGH TERRAIN CRANE - Ready for Work

ASPHALT PAVERS: Roadtec RP175, Caterpillar AP-1000B, Caterpillar AP-800D, LeeBoy 1000F, LeeBoy L8000T & Others

EXCAVATORS: Kobelco, Daewoo, Caterpillar, Takeuchi & Others

TRACK LOADER & TRACK DOZERS: Caterpillar, Case & Others

LOADER BACKHOES: Case, Caterpillar, JCB and Others.

TELESCOPIC & STRAIGHT MAST FORKLIFTS, MANLIFTS & WORKING PLATFORMS: Caterpillar, JLG, Yale, Clark, Genie, Hyster, Toyota and Others.

COMPACT TRACK LOADERS & SKID LOADERS: Bobcat, Takeuchi, Gehl, Kubota, Caterpillar, New Holland, Case, Deere and Other Brands.

SKID LOADER ATTACHMENTS - Most NEW/UNUSED: Heavy & Light Face Plates; 72" LoPro Buckets; 66" LoPro Buckets; 72" Heavy Duty Rock Buckets; 72" Root Bucket w/Top Clamp; 66" Buckets w/Top Clamp; 72" Rock Bucket; 72" Rock Bucket w/Grapple; 66" Root Bucket w/Top Clamp; 78" Snow/Mulch Bucket; Fork Frame w/42" Forks; 8" Forks w/Frames; 84" Snow Bucket; Fork Frames; Stump Buckets; New/Unused Dozer Blade; Universal Sweepers and Others Related Items

FARM, INDUSTRIAL & COMPACT TRACTORS including: Kubota, New Holland, John Deere, Case/International & Others.

Others: FARM EQUIPMENT including Many 3 Pt. Hitch from Estates, Various Hay Equipment

LARGE SUPPORT EQUIPMENT: 6,000 Gal. Commercial Fuel Tank- Like New; 1,000 Gal. Fuel Tank; (4)New/Unused 500 Gal. Fuel Tanks & Others; Portable Light Towers; Trench Rollers; (2)New/Unused Magnum 4000 Gold Series Pressure/Steam Jenny; Air Compressors; Fuel Tanks w/Pumps; Caged 275 Gal. Tanks; Diesel Generators; Diesel Water Pumps; Truck Bodies; Utility Bodies; Excavator & Backhoe Buckets of All Sizes; Selection of New & Used Equipment Tires; Tamper Heads & Breakers for Excavator; Thumbs for Excavator; Flail and Finishing Mowers; New/Used 3 Pt. Tillers; Auger Bits; 3 Pt. Scraper Blades; Straw Blowers & Other Related Items- Virtually Impossible to List, Items Coming in Daily!!

EQUIPMENT, TRACTORS & VEHICLES IN NEED OF REPAIR

DUMP TRUCKS: Tri, Tandem & Single Axle: Mack, Freightliner, Peterbilt, Kenworth, Ford, International- Some with Snow Blades and Others.

ROAD TRACTORS: Tandem & Single Axle: Mack, Freightliner, Kenworth, Peterbilt, and Others- Some with Wet-lines.

(20+) SUPPORT TRUCKS: Garbage, Cement, Service/Mechanics w/Cranes, Rollback, Cab & Chassis, Bucket, Utilities, Reefer, Dry Van w/Lift Gates, Cut Away, Fuel & Lube, Stake Bodies, Flatbeds, Cargo and Passenger Vans and Other Models.

(48) PICKUPS, VANS & AUTOMOBILES: From Estates, Bankruptcy & Other Owners.

(11) GOLF CARTS, 4 WHEELERS, ATV's: Cub Cadet, Wolverine, Kubota, Coleman, John Deere, Honda, Polaris, Kawasaki, Suzuki and Others.

(42) TRAILERS & SEA CONTAINERS: Enclosed; Dry Van, New/Unused Single and Tandem Axle Tag-a-Longs, Float, Step Deck, Gooseneck, Tag-a-Long Dump Trailers, Tag-a-Long Enclosed, Rigid Frame, Travel, Landscape, Steel Stake Body, Dry Van Bodies, (4)New/Unused 20' Sea Containers, 20' & 40 Sea Containers & Others.

SEVERAL NEW/UNUSED AMISH BUILT SHEDS OF VARIOUS SIZE



Roadtec RP175



Caterpillar AP-1000B



Caterpillar AP-800D



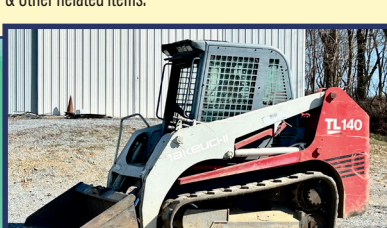
LeeBoy L8000T



LeeBoy 1000F



Deere 318D- Rental Return- Well Maintained



Takeuchi TL140 From Estate



Bobcat 319D- Rental Return Well Maintained



Caterpillar 259D3- New Tracks



Kubota B2150 HST 4X4



Genie GTH1056



Caterpillar 963



Daewoo Doosan DX340LC w/Quick Tach



John Deere X500 From Estate- Excellent Condition



Bobcat ZS4000 From Secured Creditor Very Low Hours



Grasshopper 725D- Excellent Condition



1 of 4 Toro



2015 International 4400 Series Rollback



2014 Freightliner Dump w/Lift Gate



International 5000 w/McNeilus 10 1/2 yd.



Kenworth T800 T/A



5 of 7 Volvo VNR S/A



Mack MC



New/Unused 3-Door 20' Sea Container



New/Unused 2022 Cam Superline T/A



Jayco Eagle, (4) Slide Outs- Nice



East Tri Axle



2022 MP Custom Gooseneck T/A



53' Kentucky



Food Truck



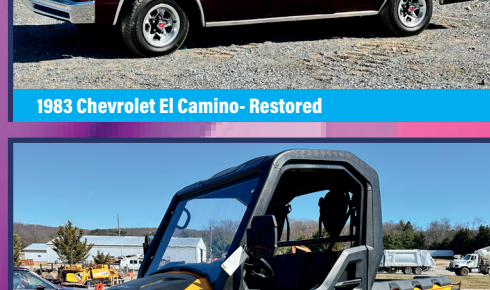
1983 Chevrolet El Camino- Restored



2014 Ford Transit- Sharp



2017 Cub Cadet 750 Challenger, 209 Hrs.



2017 Cub Cadet 550 Challenger, 62 Hrs.



Wolverine RMAX 1000- Like New

ITEMS COMING IN DAILY!! **
IF YOU WOULD LIKE TO PARTICIPATE IN THIS AUCTION
CALL 301.739.0538
CochranAuctions.com